

MONTHLY MEMBERSHIP PROGRESS REPORT

District 5M 6

Results as of: 5/31/2024

GMT:

LOCATION MINNESOTA

GMT CA

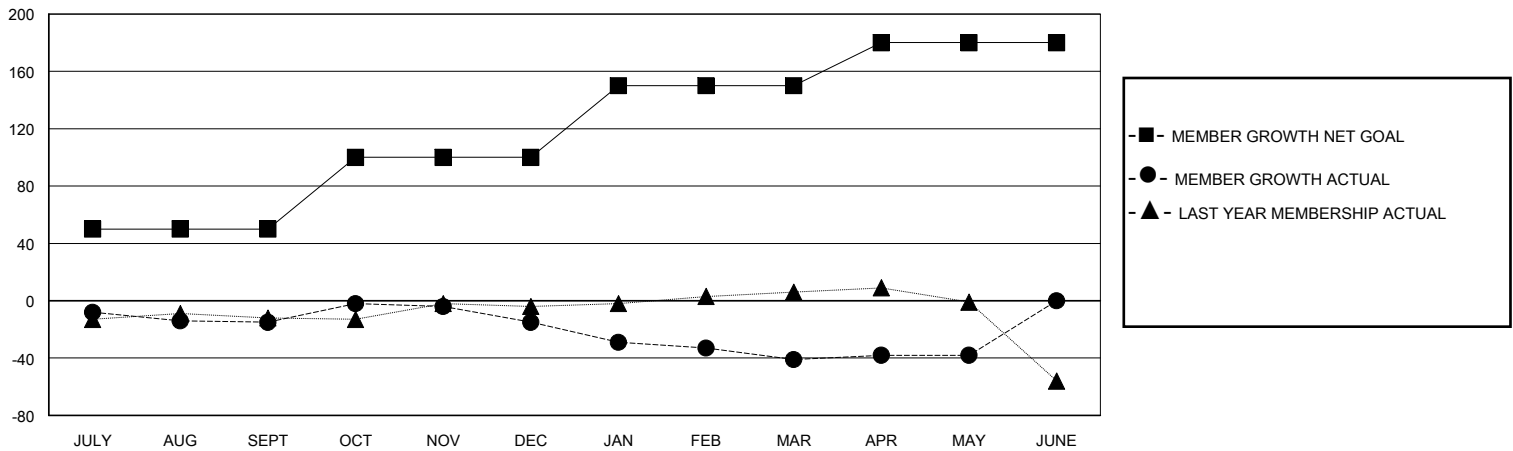
Clubs			
RESULTS FOR 2023-2024			
QUARTER	NEW CLUB GOAL	NEW CLUBS	DROPPED CLUBS
JULY/AUG/SEPT	0	0	1
OCT/NOV/DEC	0	0	0
JAN/FEB/MAR	0	0	0
APR/MAY/JUNE	1	0	0

Members			
RESULTS FOR 2023-2024			
QUARTER	MEMBER GROWTH NET GOAL	MEMBER GROWTH ACTUAL	DROPPED MEMBERS ACTUAL (including transfers)
JULY/AUG/SEPT	50	30	32
OCT/NOV/DEC	50	31	30
JAN/FEB/MAR	50	20	44
APR/MAY/JUNE	30	15	12

GOALS AND ACTUAL NEW CLUBS CUMULATIVE



GOALS AND ACTUAL MEMBERS CUMULATIVE



DROPPED CLUBS: 1	19 CLUBS OF 33 ADDED 1 OR MORE NEW MEMBERS	GENDER DISTRIBUTION	
		MALE 741 (61.49%)	FEMALE 464 (38.51%)
DROPPED MEMBERS		CLICK HERE FOR CUMULATIVE MEMBERSHIP DATA	TOTAL FAMILY UNIT MEMBERS 285
DECEASED 15	CLUB CANCELLED 0		FAMILY MEMBERS PAYING HALF DUES 143
OTHER 103	TOTAL 118		